

30" ISADORE VANITY

PRODUCT SPECIFICATIONS

Height: 38-1/2" - includes 4" backsplash

Depth: 19"

Width: 30"

Solids: Yellow Poplar

Veneers: Bottom Panel - Engineered Oak

Panels: MDF

Number of Doors: Two

USB/Power Component: Yes
(ETL5011080)

Cord Length: 6'6"

Installation Type: Floor Standing

Assembly Required: Attach the top
with sink to the cabinet

Hardware Features: European Soft-
Close Hinges, Adjustable Levers

Hardware Material: Zinc Alloy

Hardware Finish: Champagne Brass
(BW, TRB, DPO)

Sink Top Included: Yes

Sink Top Material: Smooth White
Composite

Number of Basins: One

Faucet: 8" Widespread - not included

Basin Overflow: Yes - facing front

Fits Drain Hole Size: 1-3/8"

AVAILABLE FINISHES

 BRIGHT WHITE
MN254V30BW

 CHAMPAGNE
BRASS

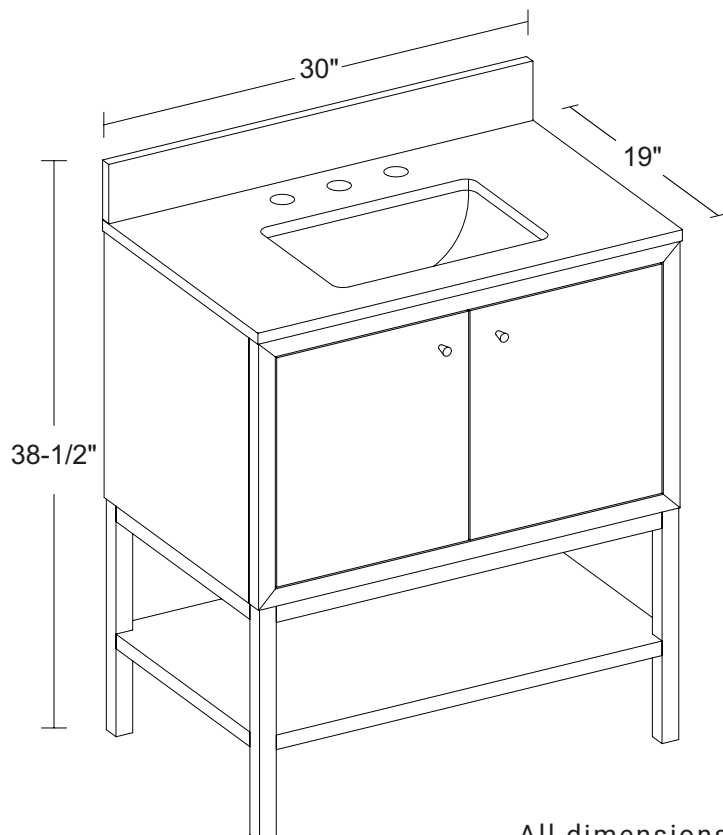
 TRICORN BLACK
MN254V30TRB

 CHAMPAGNE
BRASS

 DEEP OLIVE GREEN
MN254V30DPO

 CHAMPAGNE
BRASS

PRODUCT DIMENSIONS



All dimensions are nominal



ASME A112.19.2-2018/CSA B45.1-18

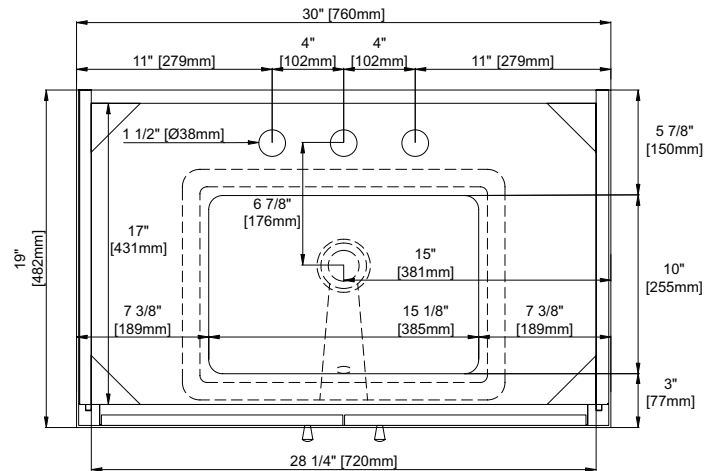
SINK MODEL: F2014B

CUPC FILE NO: 14592

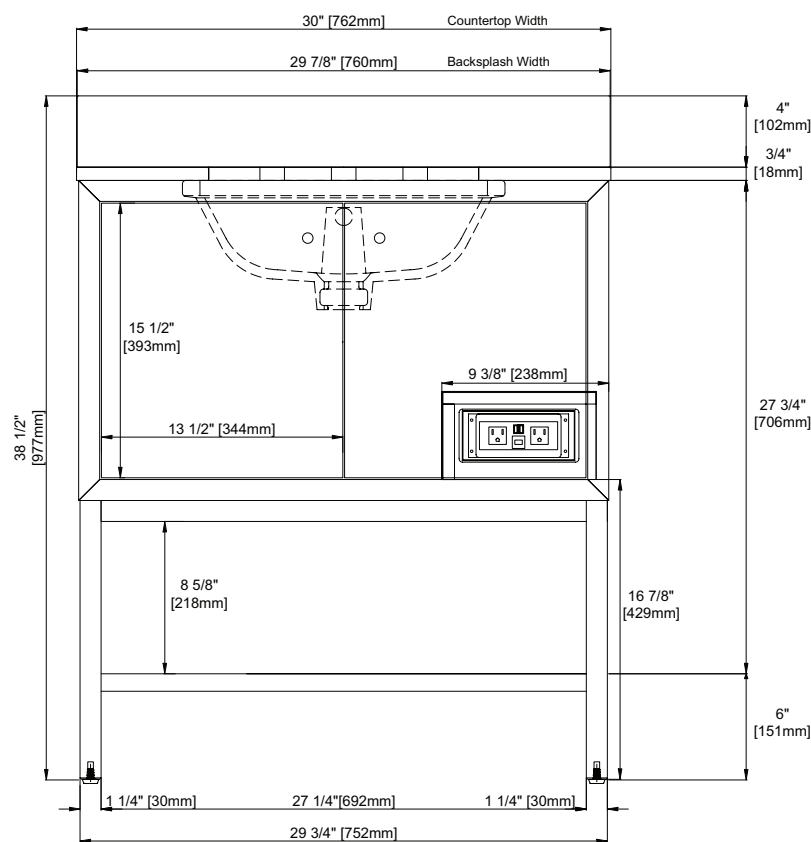
1/3

30" ISADORE VANITY

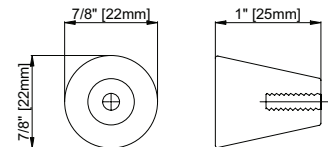
PRODUCT DIMENSIONS



Top View



Front View



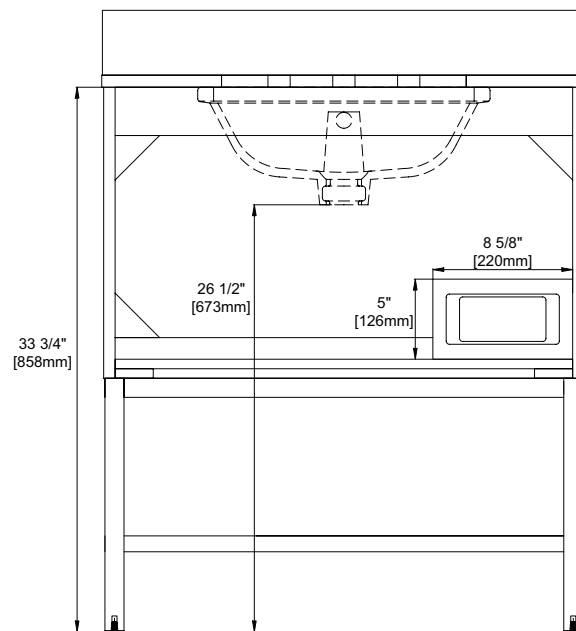
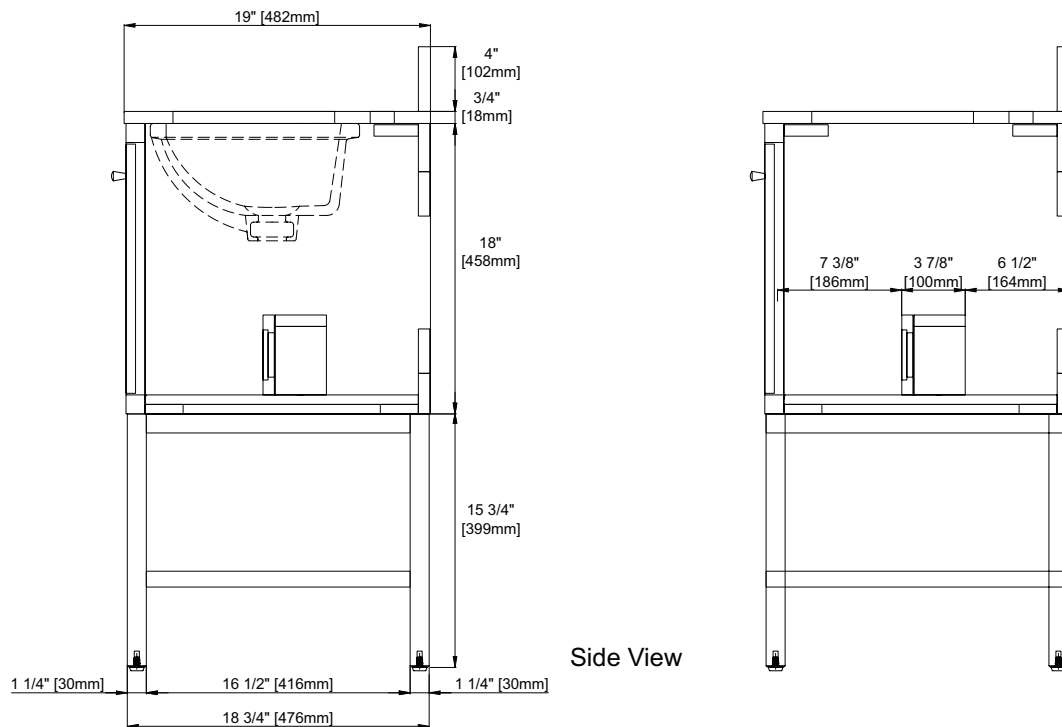
Pull

All dimensions are nominal

2/3

30" ISADORE VANITY

PRODUCT DIMENSIONS



All dimensions are nominal

3/3